

Why Are Scanning Pens Helpful?



MID TECH – meaning sophisticated but easy to use. No setup so learners are reading on their own within minutes



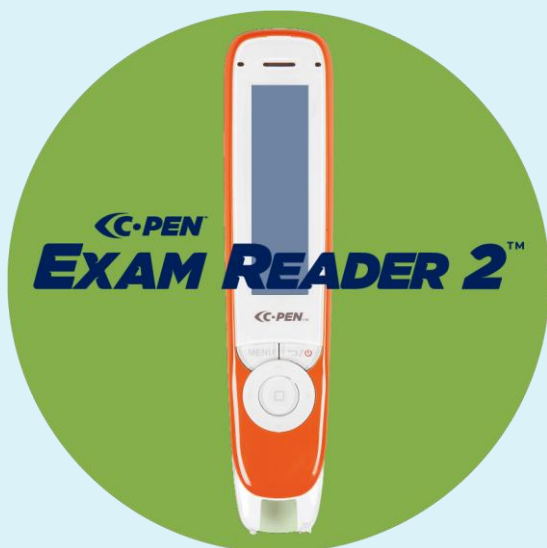
NO WIFI REQUIREMENT – the device is stand alone, so no need for internet connection



BUILT IN RECHARGEABLE BATTERY – can be used anywhere anytime



DISTRACTION FREE – Unlike using a tablet or smartphone to support reading, this device is designed specifically to support reading and keeps the child focused on reading



- **JCQ Approved** – including functional skills English Reading Exams and MFL
- **No need to apply for Access Arrangements**– should be the Normal Way of Working
- **Inclusive exam-taking** - Students can sit in the same room as peers with their headphones plugged in – less invigilators and room allocations needed
- **Scan all day** - Get enough energy in one charge for an 8+ hour day of exams — even when you're working through long texts.
- **Learn in other languages** - Spanish, French, German, Italian, Swedish, Danish, Norwegian, Dutch, Portuguese, Russian, Chinese

EXAM READER 2™



Reader



Settings

JCQ STATEMENT: "The arrangement 'Read Aloud' would also include the use of an examination reading pen. A permitted examination reading pen will not have an in-built dictionary or thesaurus, or a data storage facility. An approved application for a computer reader would also allow the use of an examination reading pen."



Coimisiún na Scrúduithe Stáit
State Examinations Commission
Corr na Madadh, Baile Átha Luain, Co. na hIarmhí
Cornamaddy, Athlone, Co. Westmeath



Joint Council for
Qualifications



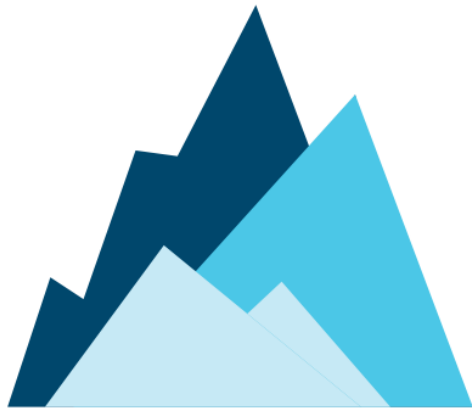
Independent Schools
Examinations Board



UNIVERSITY of CAMBRIDGE
International Examinations

CAMBRIDGE INTERNATIONAL CENTRE

Impact Study



91% of students increased their grades by using the Exam Reader

70% of students increased by 3 grades or more

Dr Trudy Coleman: Norwich City Academy Study – 2019

Survey Results

98%

of schools would recommend the ER2 to other schools

90%

achieved their expected results, or better!

98%

said the ER2 is more cost-effective than human readers

BATH SPA UNIVERSITY FINDINGS



"There is clear indication that many of the participants did benefit from development of vocabulary, reading comprehension, confidence and independence through the six weeks of pen use, particularly when given the freedom to use them both at home and at school." Bath Spa University, Mortimore, 2018



72%

Felt reading had improved

99 ^{OUT} **121**
OF

Responses indicated that, when used for the range of subjects, the pens had been helpful

Of the 30 pens issued for the study

21 pens were retained by the students

Indicating their approval of the pens

Significant gains were made by the intervention group between the pre- and post-test sessions for the NGRT items (total standardised score, vocabulary score, and comprehension score)



- **Read and define** - Built-in dictionaries give you definitions of any word you scan to help support your vocabulary needs.
- **Digital bridge** – Connect the Reader 2/3 to your computer to convert printed text to digital text.
- **Record your notes** - Store voice memos. A fantastic tool to support a limited working memory that can come from learning differences like dyslexia.



- **Text-to-Speech & Speech-to-Text** – Allow students to scan printed text and have the device read it back aloud. Or your students can talk into it, and the text appears on the screen.
- **Intuitive touchscreen navigation** - The large colour touchscreen makes Reader 3 even easier to navigate than a smartphone and simple to get to grips with for all ages.
- **Wi-Fi and Bluetooth** Connectivity
- **Read across the world** - With 5 embedded reading languages and 40+ more available when you connect online.

C-Pen Reader 2 Benefits

- Built-in Dictionary (OPD, Collins, NOAD), Recorder, 16GB Storage, Practice Mode.
- Languages – English, French, Spanish and Italian.
- Promotes independence.
- Builds reading confidence & reduces anxieties.
- Support students in accessing all areas of the curriculum.
- Inclusive, discreet tool able to be used in the classroom.
- Library Storage up to 5GB approx. 600,000 pages.

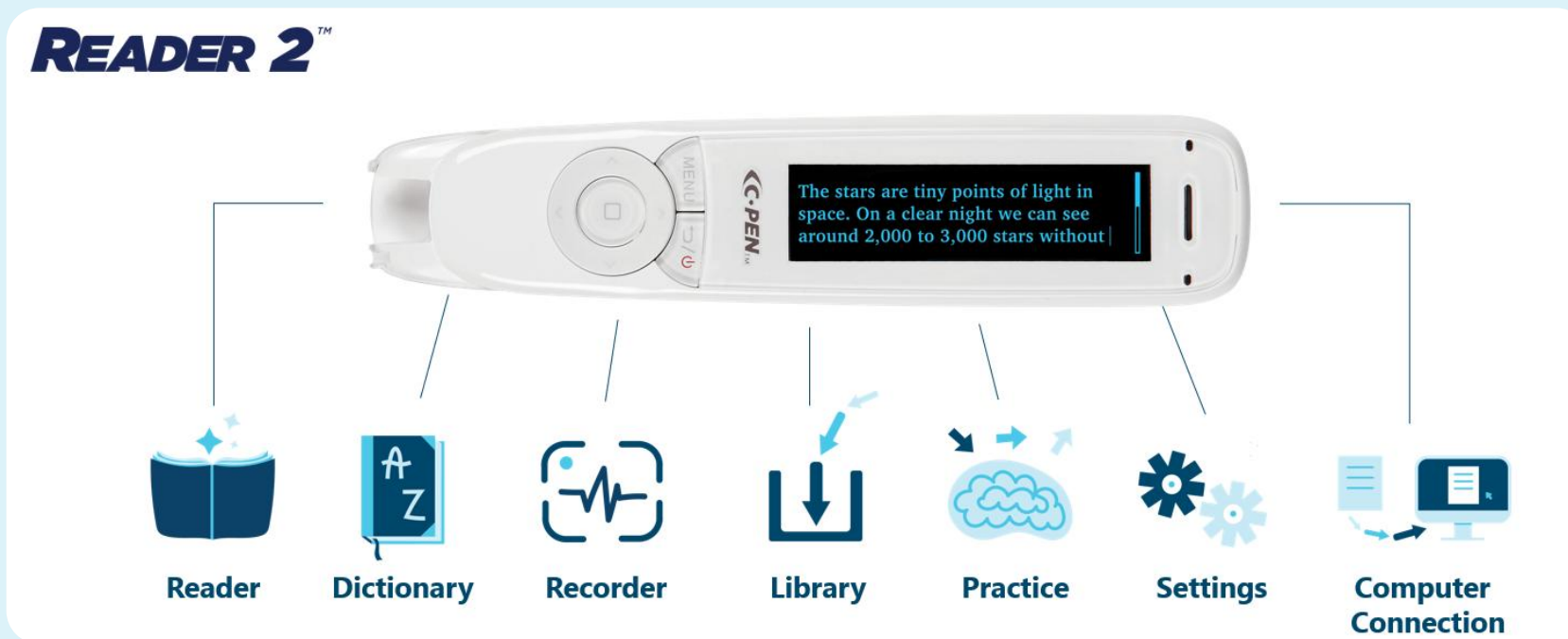


Can be used to support in KS2 SATs



**Standards
& Testing
Agency**

1. Make sure it's the child's normal way of working
2. Apply 'Exam Lock'
3. Fill out the notification of aid form
4. Give the learner the best chance of success using it in the SATs



Can be used to support KS2 SATs

1. Make sure it's the child's normal way of working
2. Apply 'Exam Lock'
3. Fill out the notification of aid form
4. Give the learner the best chance of success using it in the SATs

Exam Lock

- Navigate to the Settings Icon
- Scroll down to 'System Settings'
- Turn Exam Lock 'On'
- Set a 4-digit Passcode
- Exam Lock Successful
- To Unlock, Follow The Same Steps

READER 3™



Translation mode:

- Local – translate one word at a time and access definition (5 languages)
- Online – options below (40+ languages)

Translation type:

- One word – translate one word at a time and access the definition
- Full text – scan as much text as you need for full translation
- Conversation – hold down the microphone to speak into the device to translate

Choosing languages:

- Source language – the language on the paper, screen or that is spoken
- Target language – the language you wish to translate into

Features	The Reader	The Reader 2
Reading Accuracy	Sometimes has reading errors	Improved reading accuracy and advanced AI
Menu	Text with up and down scroll	Text and icons with left-to-right scroll
Text Reader	Mainly reads New Roman Times, not curvy font	Supports more font styles like Comic Sans, Ariel
Dictionary	Still has the same dictionaries	Still has the same dictionaries
Recorder	Audio Recording	Audio Recording
Library/Scan to File	Needs to click “scan to file” to save text to the device	Can save text from reader setting
Practice	Not on this device	Like a mini workbook, where words scanned in the dictionary go here for a recap. Word Bank
Settings	Same	Same
Audio	Settings 1-10	Settings 1-10 with extra Boost 1-5
Word Pause	Allows a 1-5 second pause between words	Allows a 1-5 second pause between words but more advanced and easier to find
Punctuation Pause	Allows a 1-5 second pause after punctuation	Allows a 1-5 second pause after punctuation but more advanced and easier to find
Attachments	Can connect the device to the computer to transfer scanned text, but with less accuracy.	Can connect the device to the computer to transfer scanned text (e.g. can be used with Google Translate, word, and PowerPoint)
Voice	Standard voice	Human Voice which includes different accents
Languages	English French Spanish	English French Spanish Italian
Storage	8GB	16GB
Exam Lock	Locks down the device with a 6-digit code	Locks down the device with a 4-digit code and can choose to keep the dictionary on lock

40 Languages

- C-Pen Reader 3 has 5 built-in reading languages that can be used offline to read (English, French, Spanish, Italian, and German).
- These languages can translate to and from English with 40+ languages accessible for translation any direction when you connect online. Here is a full list of the current languages available when connected online: Afrikaans, Arabic, Basque, Bulgarian, Cantonese, Catalan, Czech, Danish, Dutch (Belgium), Dutch (Netherlands), English (Australia), English (India), English (United Kingdom), English (United States), Filipino, Finnish, French (Canada), French (France), Galician, German, Greek, Hebrew, Hindi, Hungarian, Indonesian, Italian, Japanese, Kannada, Korean, Latvian, Lithuanian, Malay, Mandarin (China), Mandarin (Taiwan), Norwegian Bokmål, Polish, Portuguese (Brazil), Portuguese (Portugal), Romanian, Russian, Serbian, Slovak, Spanish (Spain), Spanish (United States), Swedish, Turkish, Ukrainian.

Impact Studies



PRINCE ALBERT HIGH SCHOOL: A CASE STUDY

Growing Independent Secondary Readers in Birmingham

In just 6 weeks - significant gains were made by a Year 8 Nurture Group between the pre-and post-test sessions when assessed against the York Assessment of Reading (YARC) Criteria.

COMPREHENSION:

**1 YEAR &
4 MONTHS** ↑

READING ACCURACY:

5.4 ↑
MONTHS

READING RATE:

2.4 ↑
MONTHS



“Used daily, the C-Pen Readers, helped to develop learning confidence, increased literacy and boosted reading engagement.” – Ms. T. Lead Teacher

Pupil's attitudes evolved to see themselves as **successful learners**. And gained strategies for **independent learning**.



George Dixon Primary School ReaderPen™ Research Project

AIM OF THE STUDY To undertake an evaluation of the impact of using a ReaderPen™ on primary school children who have literacy issues.

8-WEEK PROJECT **10** students in Years 4, 5 and 6 on the dyslexia pathway and in need of additional support on top of existing interventions were selected to participate in the project.

Assessment



The York Assessment of Reading for Comprehension (YARC) was used at the beginning and end of the project measuring three components, reading accuracy, comprehension and reading rate.

YARC is an individually administered reading assessment that allows you to closely observe a pupil's reading behaviors, strengths, and areas for development.

Results

The reading accuracy in read aloud graded text revealed a mean difference between pre-and post-testing of **10.25 months**.

The comprehension component of the same assessment showed a mean difference between pre-and post-testing of **10.42 months**.

The reading rate component of the assessment revealed a mean difference between pre-and post-testing of **7 months**.



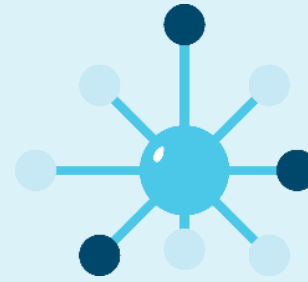
Watch & learn: Your pen's basics

You've found our Scanning Pens video guides!
Explore quick tutorials to help you scan, read, translate, and troubleshoot with ease. Get the most out of your device in minutes.



Step-by-step implementation guides

Ready to roll out your reading pens? These implementation guides walk you through setup, integration, and best practices. Get started quickly and confidently with expert support.



Training Hub



- Short Videos on the features
- Free downloadable resources

Recommendations

- Introduction and User Guide
- Helping Hands Detective Agency

www.scanningpens.co.uk

AT Lending Library



What is the AT Lending Library?

- The Department for Education has partnered with CENMAC to advise on the scheme, which will help schools in The Change Programme, 32 local authorities and around 4,000 schools, to borrow and trial a range of devices to suit the individual needs of their children and young people experiencing barriers to their learning.

Telford and Wrekin with Scanning Pens:

- To support the AT Lending Library, the council has purchased a number of our Exam Reader 2 devices for schools to borrow.
- Working in partnership with the council, Scanning Pens is also offering all Telford and Wrekin schools the opportunity to trial any of our devices for an extended 60-day period.

Pilot Program



What's Included in Your Pilot Program:

- 2x C-Pen devices per school — ready to support learners from day one.
- 60-day extended trial — explore the impact at your own pace.
- No obligation to purchase — simply return the devices if it's not the right fit.
- Online training session — with your dedicated account manager to guide initial rollout and answer questions.
- CPD-accredited training — led by Scanning Pens' Head of Education, covering best practice, whole-school implementation, and literacy strategies.

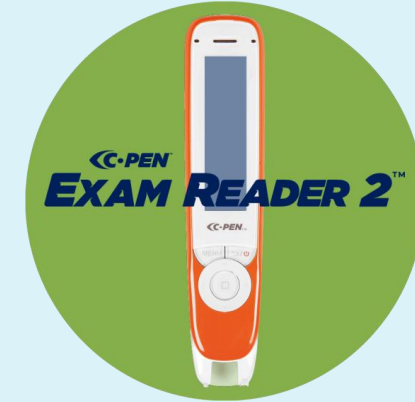
Join the movement:

Over 650 schools have already taken part in our pilot program — empowering learners and shaping inclusive practice nationwide.

**SCAN ME TO
SIGN UP**



scanningpens.co.uk



Have a question, or fancy a chat about tech?

Email me at ann@scanningpens.com | Call me on **0203 906 9514**

Or follow us on LinkedIn for updates from our team!