

Sensory Inclusion Service Hearing Impairment Newsletter

Issue
47
December 2025

Sensory Inclusion Service, Floor 6, Darby House, Lawn Central, Telford, TF3 4JA

Holiday cover

There is no TOD cover over the holidays this year.

For support, please contact the relevant health service (GP, audiology, implant centre)

Mark, our technician will be contactable from 22nd - 24th December and again on 2nd January for any faults around hearing equipment.

To contact Mark, please email sendandinclusion@telford.gov.uk

Batteries and Tubing: a reminder about how to access these



The hospital have informed us that they are no longer accepting orders of hearing aid batteries and tubing via their website.

Parents/ carers should email the Audiology department at sath.audiology@nhs.net stating the following details:

- Child's full name
- Date of birth
- Battery type required

Once received, the requested items will be posted directly to your home address.

As a reminder, please only contact Stepping Stones to request a hearing test via Community Audiology. For all other enquiries, please contact Audiology on

PRH Audiology - 01952 282804 **RSH Audiology** - 01743 261482

Or email sath.audiology@nhs.net



Shropshire
Council



Telford & Wrekin
Co-operative Council

**Protect, care and invest
to create a better borough**

WELCOME

to the team



Hello! I'm Laura. I have just started working with the wonderful SIS team as a Teacher of the Deaf for Telford and Wrekin. Having previously worked as a Primary School Teacher and then a Teacher of the Deaf in a secondary school, I'm really excited about this peripatetic role and finding it very rewarding working with many children, young people and their families. In my spare time, I like to read books, go on long walks with the family and I also love photography. I hope to see some new and familiar faces at some of the SIS events - one of them being a walk in Attingham, one of my favourite places! Hope to see you there.

Meet our new Teachers of the Deaf

Hello! I'm AJ, and I joined Telford & Wrekin Council's Sensory Inclusion Service in September as a Peripatetic Teacher of the Deaf. If you spot someone travelling between settings with a crate full of audiology kit, language resources, and colourful maths manipulatives... that could be me!



In 2018, my Y3 mainstream class welcomed a boy with severe hearing loss into its fold. He was supported by a specialist I had never heard of before: a Teacher of the Deaf! This was the catalyst to a whole new world and my adventure into Deaf Education.

I've had the privilege of working across several specialist Deaf schools, including Heathlands School for the Deaf, Frank Barnes School for Deaf Children, Braidwood Trust School for the Deaf, and Longwill School for Deaf Children. During that journey, I've been a class teacher, maths coordinator, KS2 phase lead, Duke of Edinburgh manager, Functional Skills coordinator, and staff governor; I have worn many hats! But after a decade in the classroom, this teacher is now on the road and thrilled to be able to support deaf young people across a plethora of settings.

I completed my PDip in Deaf Education at the University of Birmingham and hold BSL Level 3, with ambitions to turn my BSL fluency into higher qualifications in the future. I am passionate about access to BSL for all, and I am always more than happy to stop and sign with you!

A key passion of mine is improving access for deaf learners and supporting schools to develop communication-rich, inclusive environments where deaf children can truly thrive.

When I'm not visiting schools, you'll usually find me performing in theatre shows across Staffordshire, or spending quality time with my friends and family.

I'm excited to meet more of you and work together to support our wonderful deaf learners across Telford & Wrekin.

Freedom Pass for Travel

Telford & Wrekin Council and Shropshire Council provide a Concessionary Travel Scheme for individuals with disabilities who meet the Department for Transport eligibility criteria.

As part of this scheme, you can apply for an English Concessionary Travel Pass, which offers free travel on local bus services across England:

- Monday to Friday - between 9:30 AM and 11:00 PM
- Weekends and Bank Holidays: - at any time

Proof of dB Hearing Level of 70 or above e.g. an audiological report or report from an aural specialist is required when making an application.

To find out more information, visit

www.telford.gov.uk/roadworks-transport-and-streets/public-transport/concessionary-travel/

or www.shropshire.gov.uk/concessionary-travel/

Noah's flair for poetry



Noah contends with being on the autistic spectrum and having a moderate bilateral, sensorineural hearing loss. It's been tough but he is doing brilliantly at School and is using his amazing language understanding to write rhymes, riddles and poems. I love his pizza poem but I do actually like pineapple on pizza. Do you like pineapple on pizza?

Pizza is epic,
Pizza is cool,
Pineapple on pizza will cause WWII,
Everyone knows fruit and pizza don't mix,
If you think I'm wrong, you shan't exist!



Ray and Jake have made a brilliant start to secondary school! They've embraced the changes and challenges of this new chapter with confidence and have settled in wonderfully. Both even braved the Year 7 residential trip in November's wet weather—a fantastic opportunity to learn new skills and make new friends. Well done, Ray and Jake, on such a positive beginning to your secondary school journey!



Sophia was named the top student in Spanish across the entire Year 7. Her teacher praised her fantastic Spanish pronunciation, and she scored an incredible 100% in her end-of-year assessment. Sophia is already on track to achieve a Grade 7 in GCSE Spanish—a brilliant accomplishment and a very well-deserved award! Congratulations, Sophia!



Albie has made a fantastic start in Reception class! Recently fitted with cochlear implants, he has shown great enthusiasm and curiosity, quickly settling in and enjoying the company of his new friends. Albie particularly loves practical sessions where he can really 'get stuck in,' and his signing has improved wonderfully. He's also discovered a passion for music and has enjoyed learning to play the guitar. We can't wait to see him continue to go from strength to strength. Well done, Albie!

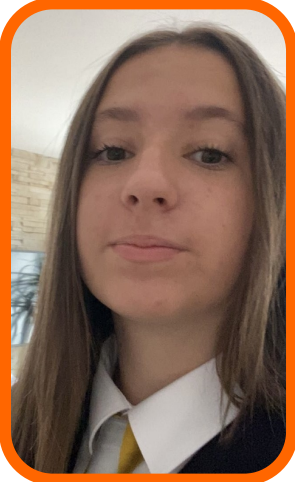
SIS Course 2025



We were thrilled to have Julia and Elliott join us at our recent Sensory Inclusion Service course at the Mercure Hotel in Telford. Both are Year 11 students from different secondary schools, and they did an amazing job speaking to an audience of around 100 people.

It took real courage and confidence to share their personal stories about living with hearing loss—the challenges they've faced and the successes they've celebrated along the way.

Julia and Elliott are truly inspiring, and we're so grateful for their contribution. We couldn't be prouder of them!



Julia shares her speech with us:

I'm here to talk to you about how being deaf can truly have a huge impact on your life and how you hear things differently around you.

How would you feel if you felt misunderstood? Or even isolated around people even though you're supported.

Well, us deaf people have mixed feelings and emotions about what happens.

To be clear, being deaf means that you either have little or no hearing at all. It affects a way a person communicates and interacts with the world around them. It can truly affect a person's life physically, emotionally and even socially.

Imagine waking up every morning feeling like your worthless and that your life depends on either others or your hearing devices. I personally wake up every morning relying on my routine and putting my cochlear implants on, but I need to make sure that my battery doesn't run out.

Imagine having constant worry about what happens if something does happen. What happens if they break? Would I ever be able to hear again? It feels like our lives depend on constant worry about what people think about me. Do they know that I struggle?

You know when you're with a group of people and you mishear a word or two that they say. They reply with "It's nothing" or "Forget about it". Do you know how we feel after you say that? Do you know how it makes us feel worthless? Why don't you just repeat it?

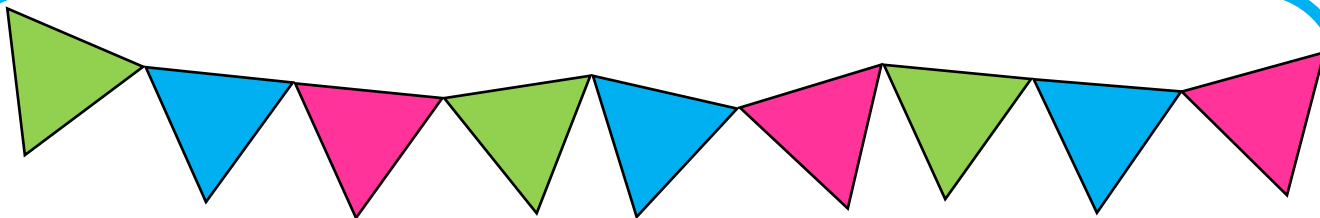
Do you also know that approximately 430 million people world-wide experience disabling hearing loss? Which adds up to around 5% of the global population. This includes over 600 children in Shropshire who struggle with hearing.

You need to just repeat yourself. It surely can't be that difficult.

This truly affects us mentally and makes us feel pointless and isolated from everyone.

How would you feel if this was you?

This is why communication with the people around you has a huge impact on your life if you struggle with hearing loss.



Fundraising



A big thank you to Randlay Primary School for raising an impressive £116.75 through their second-hand book sale. We'd also like to thank John R Thomas Florist Ltd in Church Stretton, who celebrated their 40th birthday in style and raised a fantastic £275.00 for Shropshire Deaf Children's Society.

Horse Riding

Free taster session followed by a four week course of horse riding at the Cavalier Centre in Much Wenlock.

Course of lessons heavily subsidized by Shropshire Deaf Children's Society, small financial contribution required.

Please contact Caitlin for more information

info@sdcs.org.uk



Deaf Football sessions

On Sunday, 7th December, we held our very first deaf football session - and it was a fantastic start!

These sessions are specially designed for primary-aged children who are deaf, with British Sign Language (BSL) support to make sure everyone can join in and enjoy the game.

A huge thank you to our amazing partners: Telford & Wrekin Council, Shropshire Football Association, and Shropshire Deaf Children's Society. And an extra big shout-out to Ercall Wood Academy for kindly letting us use their facilities.

We can't wait for the next session - let's keep the ball rolling!

24th January 2026 16:00 - 17:30 Ercall Wood Academy, TF1 2DT

21st February 2026 16:00 - 17:30 Ercall Wood Academy, TF1 2DT

If you are interested in attending, or would like to know more information, please contact info@ercallcoltsjfc.co.uk



Sensory Inclusion Service Family Group

SIS (HI) Family Group every Thursday during term time for deaf pre-school children and their families.

Families can arrive anytime between 9.30 am - 11.30 am.

Spring 2026

January

1st - No group

8th - Farm crafts

15th - Walker books

22nd - Penguin crafts

29th - Puzzles

February

5th - Chimese New Year crafts

12th - Heart crafts

19th - No group

26th - Daffodil crafts

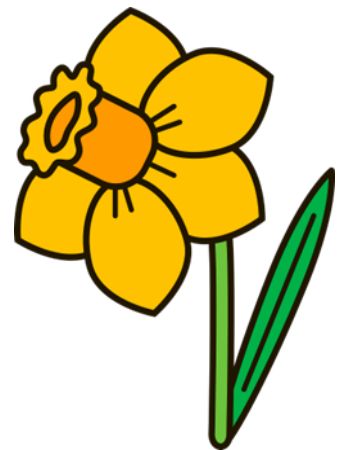
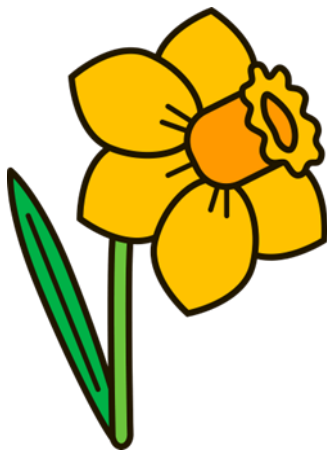
March

5th - Wildlife crafts

12th - Mother's Day crafts

19th - Sponsored Walk

26th - Party



The Stepping Stones Centre, Brunel Road, Malinslee, TF3 2BF Sat Nav TF3 2HZ

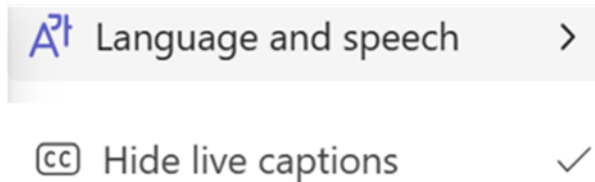
If you would like to attend Family Group, contact Nicky
nichola.clark@telford.gov.uk or 07581 035047

Claire's Top ICT Tip

Teams settings - Live captions
to see live captions when you are in a Teams meeting you can go to



under the language and speech menu choose live captions



Wishing you seasons greetings for a happy holiday!



Local Offer for Special Educational Needs and Disability

Discover everything you need to know about education, health and care services in your local area for children and young people with SEND 0-25yrs at...

www.telfordsend.org.uk



Key features...

- Search for clear and accessible information, advice and sources of support.
- Explore leisure, fun and short breaks activities.
- Find out about specialist services and education health and care plans.
- Learn how schools support special educational needs.
- Use the interactive map showing what is available near to where you live.
- Have your say through our online feedback form.



www.telfordsend.org.uk

Need this in large print or Braille?

If you would like to receive this newsletter in Large Print or Braille, please email

**sendandinclusion
@telford.gov.uk**



[Shropshire's SEND Local Offer](#) is a single place for information and services for children and young people with special education needs and/or disabilities, their families and the practitioners who support them.

Take a look at the [SEND Family directory](#) for local events, groups and things to do. For news and updates please like and follow us on [Facebook](#) and [Twitter](#).

Email: Local.Offer@shropshire.gov.uk Telephone: 0345 678 9063

Sensory Inclusion Service, Floor 6, Darby House, Lawn Central, Telford. TF3 4JA