

## Makaton

### What is Makaton?

Makaton is a unique language programme which uses signs, symbols and speech. It enables early communication and supports the development of spoken language.

### Who is Makaton for?

Using Makaton is beneficial in Early Years settings for all children, and can be introduced to babies. It is particularly effective for children who have communication difficulties, for example no speech or unclear speech.

### Strategies:

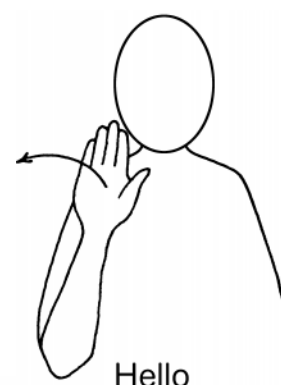
- Introduce Makaton signs that enable children to communicate their needs, for example to request objects. Begin with useful signs such as 'more' and 'finished'.
- Access **Makaton Training** through Shropshire Community Health NHS Trust [Children's Services Traded Services Brochure](#).
- More information about Makaton can be found at: [www.makaton.org.uk](http://www.makaton.org.uk).

**Links to EYFS:** CL, PSED, Lit, KU, EAD

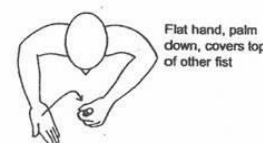
**Links to SEND Code of Practice:** C&I, C&L, SEMH

### Try this at home:

- Watch Mr Tumble on BBC CBeebies together with your child.
- Learn a 'sign of the week' from We Talk Makaton website: [www.wetalkmakaton.org](http://www.wetalkmakaton.org)
- Learn to sign favourite nursery rhymes at: [www.singinghands.org](http://www.singinghands.org)



Hello



Flat hand, palm down, covers top of other fist

More

Remember - Always sign and say together  
Go slow and show

