

SEND 0-25



Telford & Wrekin  
COUNCIL



# NEWSLETTER

June 2018

## Update from SEND Service Delivery Manager – Simon Wellman

Dear Colleagues,

As we approach the end of the summer term I have one more request. Last week we launched the High Need Review and Strategic Plan for SEND and opened a consultation for you to feedback about our suggested plans and we would really welcome your views! Attached to this newsletter is the plan and consultation form, with further information provided overleaf. Please do take some time to read through all the information - I know there is quite a lot but hopefully you will understand the rationale behind the proposals and will support the principle of broadening our continuum of specialist educational provision across Telford and Wrekin. For me it is an exciting next step in our approach to effectively meeting the needs of children with SEND.

This week we will also be issuing annual review lists for schools. These will show those reviews that have been received within time (thank you!) and those which are outstanding. Please do take a look at your list and check for accuracy. Where you find any errors please let us know by sending an email to [SENDandInclusion@telford.gov.uk](mailto:SENDandInclusion@telford.gov.uk)

Oops that's two requests I've made. Hang on in there we only have a few weeks left!

Best wishes

Simon

## Congratulations to Nicola Davies!

We would like to announce and congratulate Nicola Davies, Deputy Head Teacher at the Bridge School, on her new appointment as Whole School SEND Deputy Regional Lead for NASEN in the West Midlands. This role will be for 1 day a week. It is a brilliant appointment for Nicola, but also superb for us in Telford and Wrekin. We look forward to learning about how to support our children and young people with SEND via the whole school SEND approach.



## High Needs Review

### Consultation on the High Need Review and Strategic Plan for SEND

Today we are launching a new consultation which is focused around developments for specialist (high need) provision for children with special educational needs and disabilities (SEND).

Nationally, there is recognition that the population of children with SEND is growing and in March 2017 the DfE committed funding across local authorities to review their specialist provision and services. With a known increase in demand, particularly surrounding placement requests for specialist provision, particular emphasis was drawn on ensuring sufficient good school places in the local area for those with SEND.

At this time, the DfE also announced capital funding for local authorities to invest in new places and/or improvements for pupils with education, health and care (EHC) plans. The local authority has developed a concise plan, available on the local offer at [www.telfordsend.org.uk](http://www.telfordsend.org.uk), to show how it intends to invest this funding focusing currently on the relocation of Houghton Special School. The publication of the High Need Review and Strategic Plan for SEND (see attached documents), is our next step that will help to determine our longer term strategy which aims to secure sufficient specialist provision well into the future.

We are very pleased to be consulting with you regarding our proposals and feel that we are on the next step of our journey to redesign specialist provision within Telford and Wrekin. We have an opportunity to do something differently given a recommendation within the review that we broaden our provision to include resource base provision within mainstream schools, which in turn, will provide parents with greater choice when considering placements for those children with high needs. I am proud that Telford and Wrekin is an inclusive borough and our proposed approach will strengthen this position further.

I hope that you find the High Need Review and Strategic Plan for SEND informative and ask that you submit comments about the proposals using the proforma at the end of the document by no later than **23rd July 2018**. These should be returned to [SENDandInclusion@telford.gov.uk](mailto:SENDandInclusion@telford.gov.uk) with the title of 'High Need Review and Strategic Plan of SEND'. We are very keen to hear from all educational settings and partners from across care and health services, and our parents and young people with SEND.

## Inclusive School Forum (ISF) Dates

The dates for the academic year 2018/2019 are as follows:

DATE OF FORUM	TIME	VENUE	PAPERS DUE IN
Tue 11 September '18	9am - 1pm	Telford Park School	Fri 7 September '18
Tue 2 October '18	9am - 1pm	Telford Park School	Mon 24 September '18
Tue 6 November '18	9am - 1pm	Telford Park School	Thu 25 October '18
Tue 4 December '18	9am - 1pm	Telford Park School	Mon 26 November '18
Tue 15 January '19	9am - 1pm	Telford Park School	Mon 7 January '19
Tue 5 February '19	9am - 1pm	Telford Park School	Mon 28 January '19
Tue 5 March '19	9am - 1pm	Telford Park School	Mon 25 February '19
Tue 2 April '19	9am - 1pm	Telford Park School	Mon 25 March '19
Tue 7 May '19	9am - 1pm	Telford Park School	Fri 3 May '19
Tue 4 June '19	9am - 1pm	Telford Park School	Fri 24 May '19
Tue 2 July '19	9am - 1pm	Telford Park School	Mon 24 Jun '19

**All information and paperwork for the Inclusive School Forum can be found at:**

**[http://www.telfordsend.org.uk/localofferservices/info/1/home/68/inclusive\\_school\\_forum\\_guidance\\_and\\_procedure](http://www.telfordsend.org.uk/localofferservices/info/1/home/68/inclusive_school_forum_guidance_and_procedure)**

Many thanks to colleagues who have supported the ISF this year who include Ellen Smith (Apley Wood), Tammy Lockley (Aqueduct), Mandie Haywood (Old Park), Alison Prosser (Telford Langley and Park), Lynne McCormack (Haughton), Amanda Weaving and Karen Athawes (Ercall Wood), Rachel Gear, Aimee Plimmer and Rachel Cook (Newdale Primary), Sandra Osman (Donnington Wood Junior) and Denise Rock (Redhill Primary).

**We all look forward to supporting colleagues next year at the ISF!**

## Key Dates

### Annual Reviews: Early Alert – please start planning now

As you are aware, we are working to provide all settings with accurate lists each term detailing dates when we require annual reviews to be completed by. There are however some key annual reviews that require completing in the Autumn Term to link annual reviews with the phase transition process.

As you know we have some statutory dates by which we need to finalise EHC plans with a named September placement where a child/young person is moving between phases:

- **15<sup>th</sup> February 2019** for any child going into reception, year 3 (where there is movement between an infant school to a separate junior school only) and Year 7 in September 2019
- **31<sup>st</sup> March 2019** for young people entering post 16 provision in September 2019

We therefore require annual reviews for the following year groups to be completed during the Autumn Term, please do stagger the reviews throughout the term. The final deadline for these annual reviews to be received by the SEND Team is detailed below:

Year Groups	Please send completed annual reviews to the SEND team by:
Nursery year (aged 3 since 1 <sup>st</sup> September 2018)	16 <sup>th</sup> November 2018
Year 2 pupils (infant school only)	25 <sup>th</sup> October 2018
All Year 6 pupils	16 <sup>th</sup> November 2018
All Year 11 pupils	25 <sup>th</sup> October 2018

We understand that in some circumstances, a full year may not have passed since the last annual review for children in these year groups but their completion is still required by the specified dates.

The annual reviews of all other year groups should occur within 12 months of their previous annual review.

## Thinking of requesting an EHC assessment? Please now wait until September 2018

The SEND team respectfully request that you now wait until the Autumn Term before submitting an EHC needs assessment request. As you can imagine the summer holiday creates a problem given children are not available for assessment. Should an EHC needs assessments be submitted an exemption to the 20 week timescale will be applied and so ultimately there is no difference in applying for an EHC needs assessment now or wait until September 2018.

Thank you for your support.

## Save the Date!

Next Years SENCO network meetings are scheduled for:

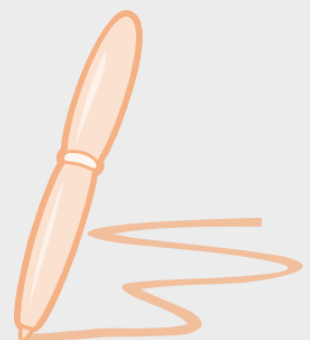
17<sup>th</sup> October 2018

6<sup>th</sup> February 2019

15<sup>th</sup> May 2019

**From 4:00 - 5:30pm**

Venues TBC



## New staff in the SEND Team

### Kylie Bull



Kylie's previous role was a Primary School Teacher. She joined the SEND and Inclusion Team in September 2016, where she was a member of the Transfer Team; her role was to support Telford and Wrekin in the conversion of Statements into Educational Health and Care Plans, in accordance with the reforms outlined in the Children and Families Act 2014. She was then appointed SEND Officer for Wrekin Locality and SEND Co-ordinator for the Preparing for Adulthood Locality and commenced these posts in April 2018.

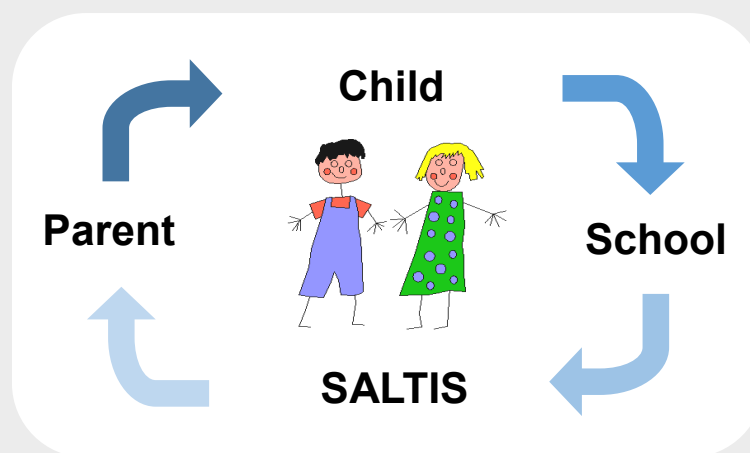
### Rebecca Lancaster



Rebecca is a qualified primary school teacher and taught in Essex for a number of years. She worked as a SEN Commissioner for Essex County Council working with special schools, specialist provisions and the Primary Care Trust. After relocating to Shropshire in 2014 she worked briefly in the Delivery and Planning team, reporting on local intelligence. For three years she was a Public Health Commissioner, focusing on the Public Health issues for Children in Telford and Wrekin. She joined the SEND and Inclusion Team in April 2018, to work as a SEND Officer covering the Wrekin locality.



## Speech and Language Therapy Inclusion Service (SALTIS)



The Speech and Language Therapy Inclusion Service (SALTIS) is funded by Telford and Wrekin Council and operates across schools in Telford & Wrekin.

It is included in the Telford and Wrekin SEND local offer, within the Speech and Language Therapy section.

The SALTIS Therapists work for Shropshire Community Health Trust (SCHT) and link closely with the Core Speech and Language Therapy service. SALTIS provides a more intensive level of involvement with schools than the core Speech and Language Therapy service.

The service is for children in Reception and Year 1 classes who show significant delay in receptive or expressive language, this may include children where these difficulties are the most significant part of an overall profile of developmental delay.

SALTIS achieves positive outcomes for children and teaching staff, and in many of the schools will support a sustainable use of resources and knowledge, to maximise learning potential and promote the development of speech, language and communication skills amongst young children.

## Aims of The Service

SALTIS provides an opportunity for schools, Speech and Language Therapists and parents to work together more closely and effectively to:-

- Help children develop their attention and listening skills and their ability to understand and use spoken language.
- Help children learn from the National Curriculum and take part in classroom activities.
- Share ideas of different ways to focus on speech, language and communication targets during the school day and to help parents to support this learning at home.

School staff should complete a SCHAT Speech and Language Therapy Referral Form and state why they would like a child to be considered for input from the SALTIS team. (Consent from parents is required for the referral, and the initial appointment may be offered in the local community clinic).

Please find the SCHAT Speech and Language Therapy Referral Form at:

<http://www.shropscommunityhealth.nhs.uk/content/doclib/11130.doc>

**If you would like further information please contact:**

The SALTIS Speech and Language Therapy Team,  
The Stepping Stones Centre, Brunel Road, Malinslee, Telford.  
TF3 2BF





## Local Offer for Special Educational Needs and Disability

Discover everything you need to know about education, health and care services in your local area for children and young people with SEND 0-25yrs at...

[www.telfordsend.org.uk](http://www.telfordsend.org.uk)

### Key features...

- Search for clear and accessible information, advice and sources of support.
- Explore leisure, fun and short breaks activities.
- Find out about specialist services and education health and care plans.
- Learn how schools support special educational needs.
- Use the interactive map showing what is available near to where you live.
- Have your say through our online feedback form.

